

Piroon Mootsikapun, M.D.

A 45-year-old diabetic man living in Northeast Thailand presented with acute fever and progressive dyspnea. He was hospitalized at a rural hospital, and a diagnosis of left lower lobe pneumonia was made. He had been treated with ceftriaxone and clarithromycin for 3 days. He continued to have spikes of fever and developed acute respiratory failure. He was intubated

and referred to our hospital. Chest radiogram showed bilateral alveolar infiltrations. Sputum Gram stain was performed (Figure).

Questions

1. What is the most likely causative agent?
2. What is the recommendation of treatment?

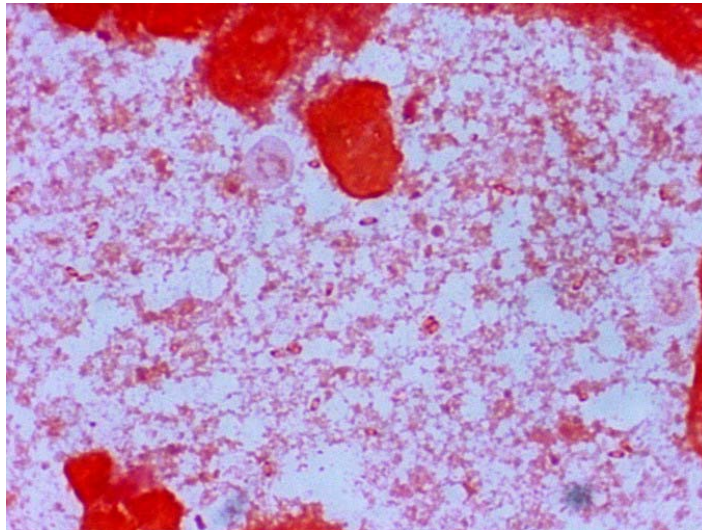


Figure.

(Please see the answer of this Photo Quiz on page 53)