

Piroon Mootsikapun, M.D.

Answers

1. *Burkholderia pseudomallei*: Pneumonia is a common presentation of melioidosis which is caused by this organism. *B. pseudomallei* is a small Gram-negative bacillus which has the morphology seen by Gram staining of the clinical specimens as safety-pin or bipolar staining.¹ Melioidosis is an endemic infection in Asia Pacific region. It usually occurs in patients with preexisting conditions including diabetes, thalassemia, and chronic kidney disease.¹ It can cause acute or chronic infection as well as mild or severe infection. The most common presentations include pneumonia, liver and/or splenic abscess, septic arthritis, bacteremia, or disseminated infection.^{1,2} The infection results in high morbidity and mortality if delayed or inappropriate treatment.

2. Ceftazidime 6 g daily was recommended as an initial treatment for at least 14 days or until clinical resolution.^{1,2} Doxycycline 100 mg and cotrimoxazole 1,200/240 mg twice daily are given further as a maintenance therapy for at least 5 months to prevent a relapse.^{1,2} The other effective initial antibiotics are imipenem, meropenem, amoxicillin/clavulanate, and cefoperazone/sulbactam.

References

1. Peacock SJ. Melioidosis. *Curr Opin Infect Dis* 2006;19:421-8.
2. Cheng AC, Currie BJ. Melioidosis: epidemiology, pathophysiology, and management. *Clin Microbiol Rev* 2005;18:383-416.

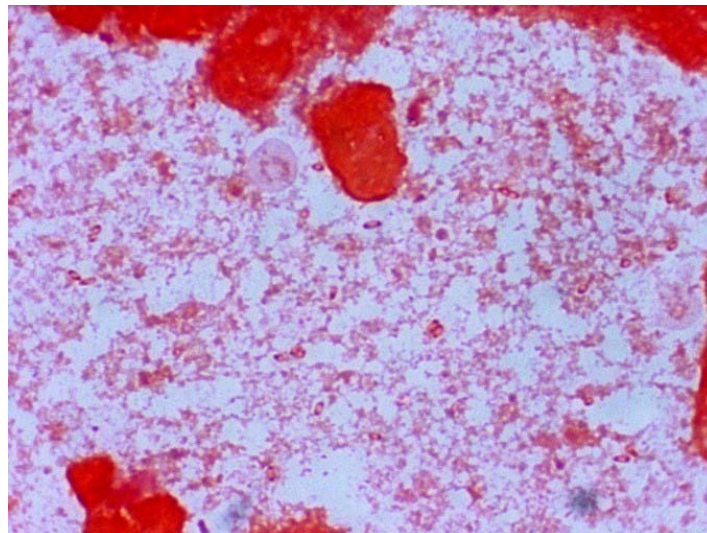


Figure.