

**Piroon Mootsikapun, M.D.**

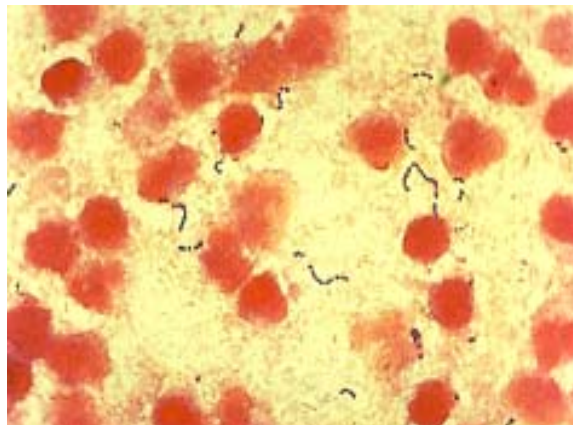
A 66-year-old man presented with fever in association with pain and swelling of right arm for 2 days. Initially, it appeared as an erythema over his right hand and then spreaded upward to the arm, 2 days prior to admission (PTA). One day PTA, the

skin lesions turned purplish, and there was a formation of hemorrhagic blebs (Figure 1). He was found hypotension, oliguric, and hypoxemia at emergency room. The fluid obtained from the bleb aspiration was Gram stained (Figure 2).

**What is the diagnosis and management?**



**Figure 1. hemorrhagic blebs over right arm of the patient.**



**Figure 2. Gram stain of the bleb aspirate.**

(Please see the answer of this Photo Quiz on page 29)