

Piroon Mootsikapun, M.D.

A 40-year-old man, with a history of renal transplantation, presented with subacute progressive dyspnea for 2 weeks. Physical examination revealed fine crackles of both lungs. Chest radiogram was performed, and showed bilateral lower lung interstitial

and alveolar infiltrates. He received initial therapy with intravenous ceftriaxone and azithromycin but no clinical improvement. At day 4 of hospitalization, bronchoscopy with bronchoalveolar lavage (BAL) was performed. Wright's stain of BAL fluid is shown in Figure.

1. What is the most likely causative agent?
2. What is the recommendation of treatment and prevention?

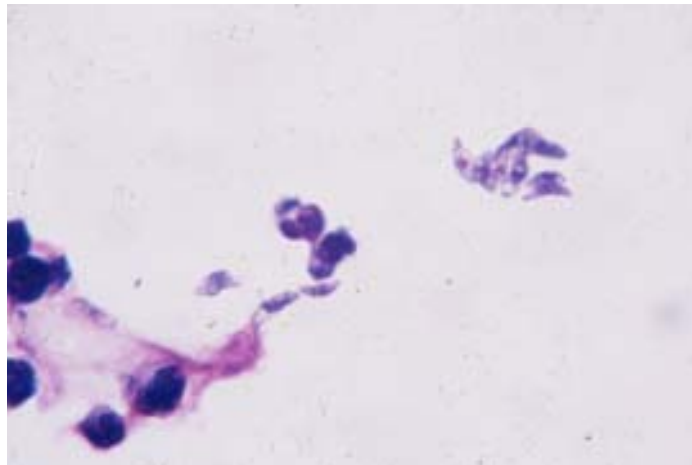


Figure. Wright's stain of bronchoalveolar lavage.

(Please see the answer of this Photo Quiz on page 75)